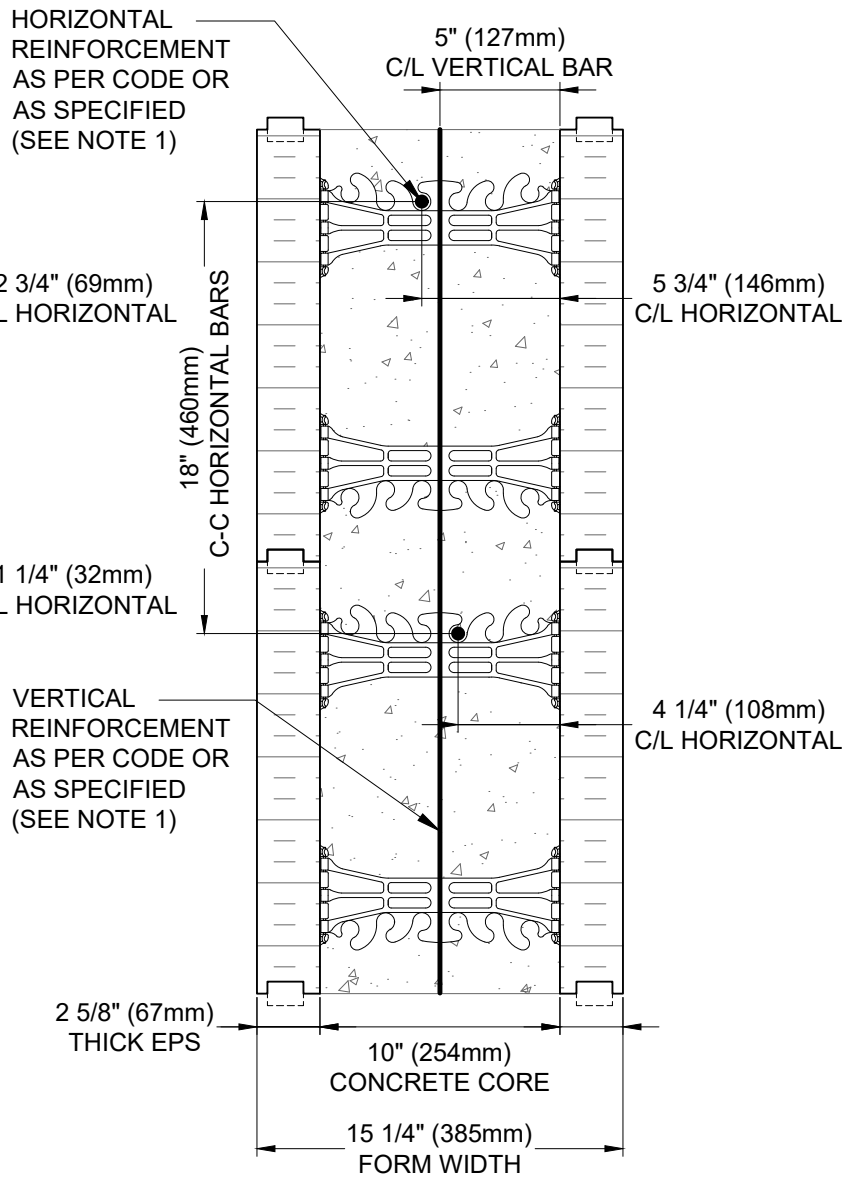


**VERTICAL BARS OFF CENTER
TYPICAL BELOW GRADE**



**VERTICAL BARS AT CENTER
TYPICAL ABOVE GRADE**

NOTES:
1) FOR OPTIMAL REINFORCEMENT PLACEMENT IN THE NUDURA FORM, SPACING OF HORIZONTAL REINFORCEMENT TO BE SPECIFIED AT 18" (457mm) O.C. AND VERTICAL REINFORCEMENT TO BE SPECIFIED AT MULTIPLES OF 8" (203mm) O.C. REFER TO NUDURA REINFORCEMENT PLACEMENT DETAILS.

This detail is for general informational purposes only. The project design professional determines, in its sole discretion, whether this detail or a functionally equivalent detail is best suited for the project with respect to any architecture, engineering, and design requirements, including any local building code requirements. If this document is not reviewed and the product is not approved for use by a licensed design professional, the customer agrees that the detail may contain substantive flaws requiring correction, and hereby releases Tremco CPG Inc. from any and all liability related to the design and installation of the product. This detail is subject to change without notice. Contact Tremco to ensure you have the most recent version.

Engineering Parameters



Detail: Nudura 10" (254mm) Standard Form Reinforcement Placement, Vertical Section View		
Drawn by: NL	Checked by: KS	Scale: 1:8
Revision #: 03	Revised by: KAB	Date: 3/13/2024

File Name:
A10B01



NUDURA STANDARD
10" (254mm) FORM UNIT

BRICK VENEER c/w 1"
(25mm) AIR SPACE
AND BRICK TIES

TREMCO EXOAIR 230 OR
APPROVED EQUIVALENT

FLASHING MATERIAL AND
WEEP HOLES INSTALLED
AS PER CODE

10M (#4) CONT.

GRADE MINIMUM
2% SLOPE

TREMCO/NUDURA APPROVED
PARGE COAT WHERE
EXTENDED ABOVE GRADE

TREMCO/NUDURA APPROVED
FLUID APPLIED OR SHEET
WATERPROOFING MEMBRANE

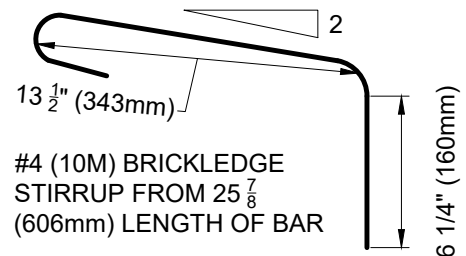
TREMCO DRAINAGE OR
PROTECTION BOARD

HORIZONTAL REINFORCEMENT
AS PER CODE OR AS SPECIFIED
(SEE NOTE 1)

VERTICAL REINFORCEMENT AS
PER CODE OR AS SPECIFIED
(SEE NOTE 1)

MIN. 1/2" (13mm) GYPSUM BOARD

2" (50mm)



#4 (10M) BRICKLEDGE
STIRRUP FROM 25 7/8
(606mm) LENGTH OF BAR

NOTES:

- 1) FOR OPTIMAL REINFORCEMENT PLACEMENT IN THE NUDURA FORM, SPACING OF HORIZONTAL REINFORCEMENT TO BE SPECIFIED AT 18" (457mm) O.C. AND VERTICAL REINFORCEMENT TO BE SPECIFIED AT MULTIPLES OF 8" (203mm) O.C.
- 2) MINIMUM CONCRETE COMPRESSIVE STRENGTH AT 28 DAYS 3000 PSI (20 MPa).
- 3) REINFORCING STEEL SHALL BE HARD GRADE DEFORMED BARS CONFORMING TO CSA G30.12 GRADE 400.
- 4) WALL REINFORCING SHALL BE IN ACCORDANCE WITH NUDURA INTEGRATED BUILDING SYSTEM, LOCAL CODE OR ENGINEERING DRAWINGS.
- 5) BRICK UNIT WEIGHT: 40LBS/FT² (1.9 KPa) IN VERTICAL PLANE.
- 6) MAXIMUM WALL HEIGHT: 27' (8.23m) UNLESS ENGINEERED OTHERWISE
- 7) ASSUME BRICK LAYING IN ACCORDANCE WITH APPLICABLE CODES.

This detail is for general informational purposes only. The project design professional determines, in its sole discretion, whether this detail or a functionally equivalent detail is best suited for the project with respect to any architecture, engineering, and design requirements, including any local building code requirements. If this document is not reviewed and the product is not approved for use by a licensed design professional, the customer agrees that the detail may contain substantive flaws requiring correction, and hereby releases Tremco CPG Inc. from any and all liability related to the design and installation of the product. This detail is subject to change without notice. Contact Tremco to ensure you have the most recent version.

Non-Combustible Construction

Detail: Nudura 10" (254mm) Brick Ledge Reinforcement Detail, OWSJ Floor Connection at Grade, Brick Veneer Finish, Vertical Section View

Drawn by: JN

Checked by: KS

Scale: 1:8

Revision #: 04

Revised by: KAB

Date: 3/13/2024

File Name:

A10B02



Nudura Technical Support: 866-468-6299
International: +1 705-726-9499

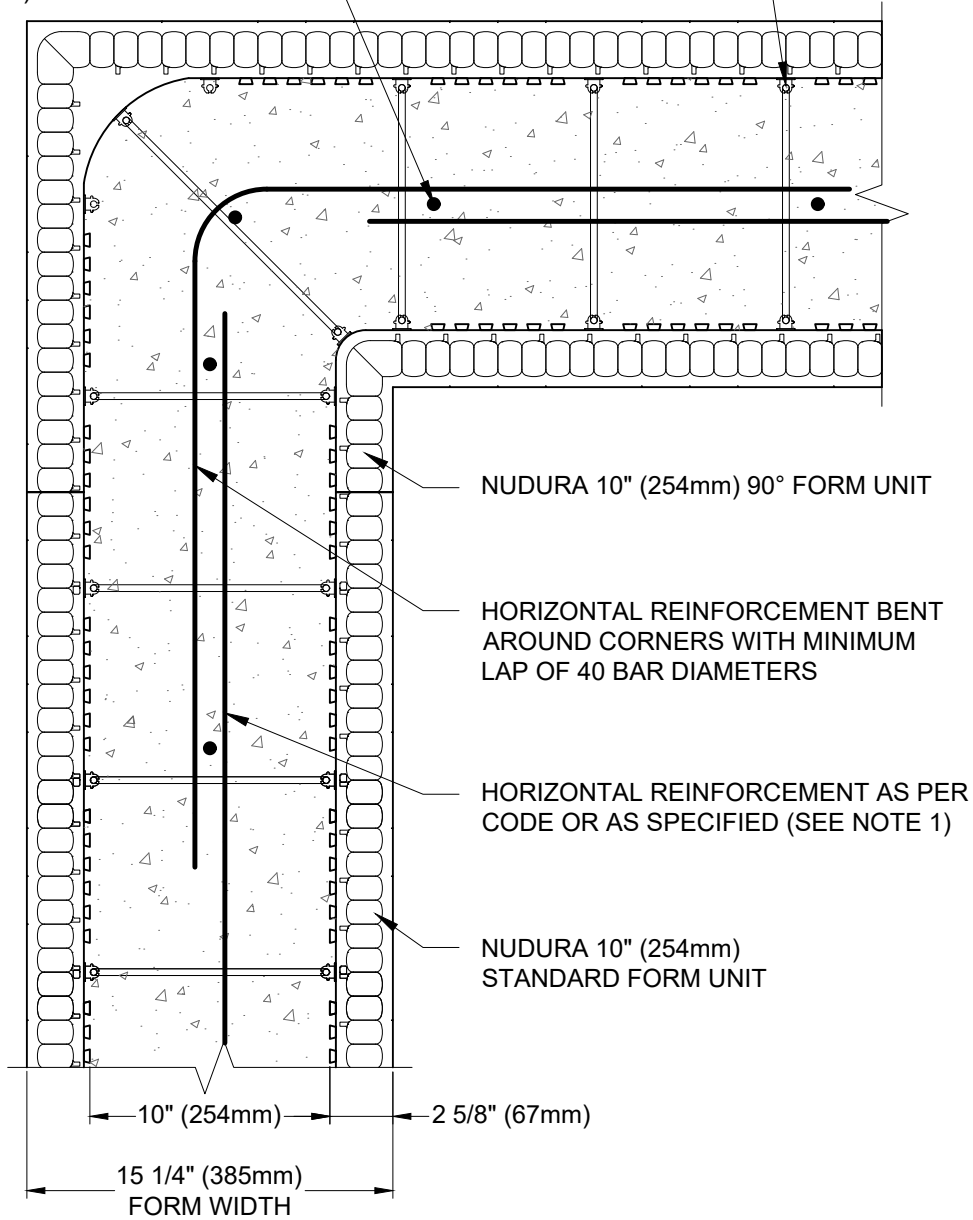
www.tremcocpg.com



Construction Products Group

VERTICAL REINFORCEMENT AS PER CODE OR AS SPECIFIED (SEE NOTE 1)

WEBS 8" (203mm) O.C.



NOTES:
 1) FOR OPTIMAL REINFORCEMENT PLACEMENT IN THE NUDURA FORM, SPACING OF HORIZONTAL REINFORCEMENT TO BE SPECIFIED AT 18" (457mm) O.C. AND VERTICAL REINFORCEMENT TO BE SPECIFIED AT MULTIPLES OF 8" (203mm) O.C. REFER TO NUDURA REINFORCEMENT PLACEMENT DETAILS.

This detail is for general informational purposes only. The project design professional determines, in its sole discretion, whether this detail or a functionally equivalent detail is best suited for the project with respect to any architecture, engineering, and design requirements, including any local building code requirements. If this document is not reviewed and the product is not approved for use by a licensed design professional, the customer agrees that the detail may contain substantive flaws requiring correction, and hereby releases Tremco CPG Inc. from any and all liability related to the design and installation of the product. This detail is subject to change without notice. Contact Tremco to ensure you have the most recent version.

Engineering Parameters



Detail: Nudura 10" (254mm) 90° Form Reinforcement, Plan View

File Name:

Drawn by: JN

Checked by: KS

Scale: 1:8

A10B03

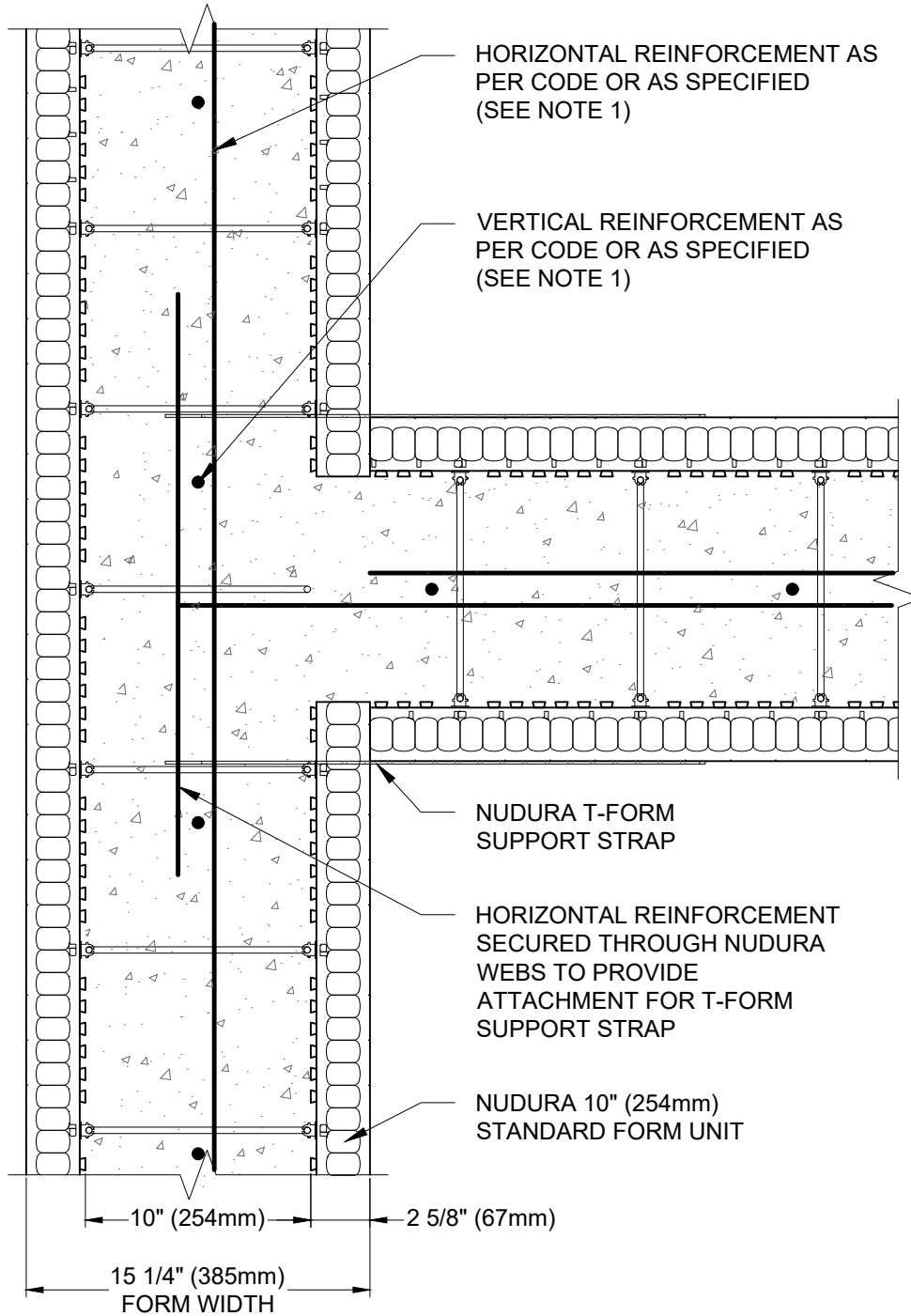
Revision #: 02

Revised by: KAB

Date: 3/13/2024

www.tremcocpg.com





NOTES:
 1) FOR OPTIMAL REINFORCEMENT PLACEMENT IN THE NUDURA FORM, SPACING OF HORIZONTAL REINFORCEMENT TO BE SPECIFIED AT 18" (457mm) O.C. AND VERTICAL REINFORCEMENT TO BE SPECIFIED AT MULTIPLES OF 8" (203mm) O.C. REFER TO NUDURA REINFORCEMENT PLACEMENT DETAILS.

This detail is for general informational purposes only. The project design professional determines, in its sole discretion, whether this detail or a functionally equivalent detail is best suited for the project with respect to any architecture, engineering, and design requirements, including any local building code requirements. If this document is not reviewed and the product is not approved for use by a licensed design professional, the customer agrees that the detail may contain substantive flaws requiring correction, and hereby releases Tremco CPG Inc. from any and all liability related to the design and installation of the product. This detail is subject to change without notice. Contact Tremco to ensure you have the most recent version.

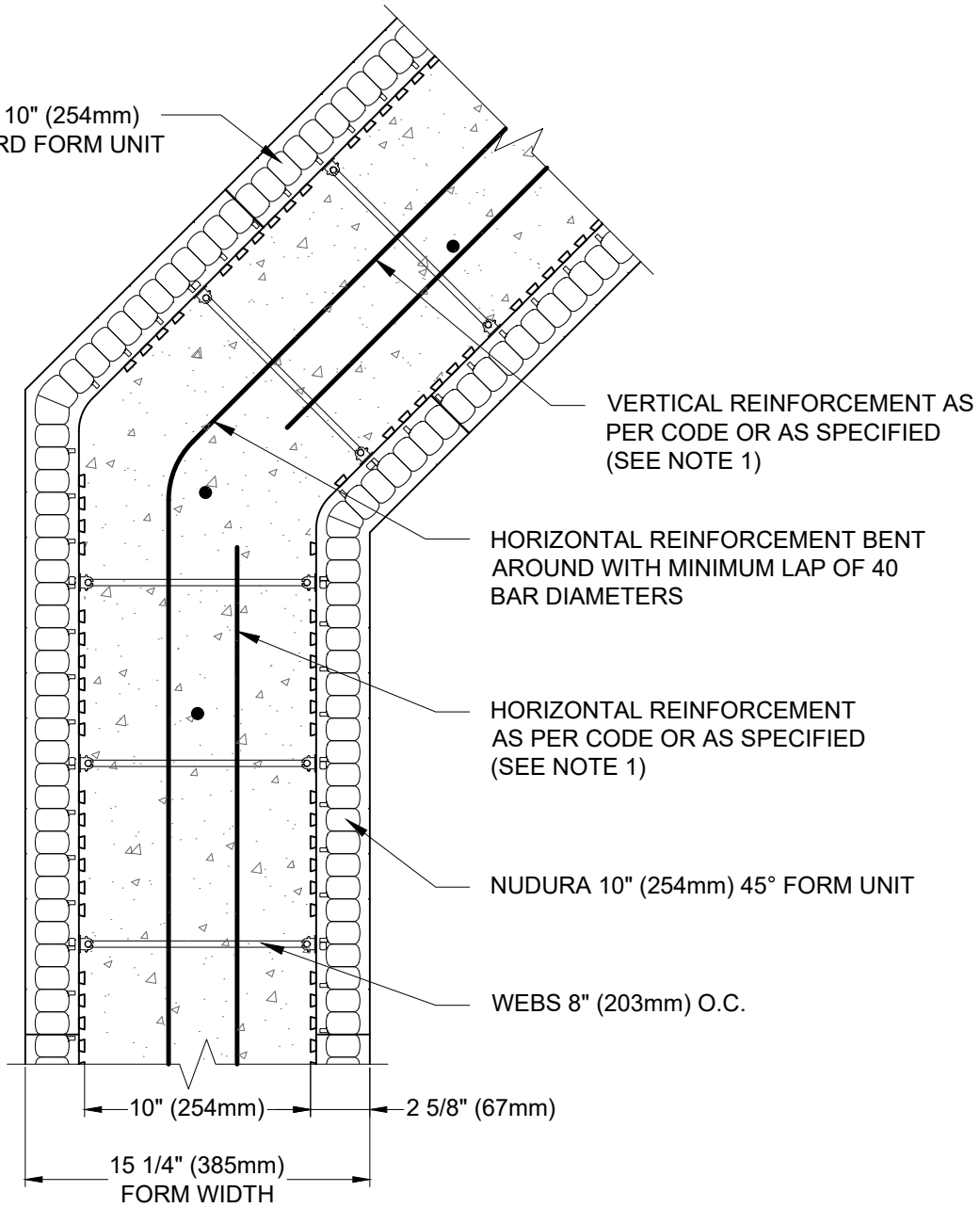
Engineering Parameters



Detail: Nudura 10" (254mm) T-Form Reinforcement, Plan View			File Name:
Drawn by: JN	Checked by: KS	Scale: 1:8	A10B05
Revision #: 03	Revised by: KAB	Date: 3/13/2024	



NUDURA 10" (254mm)
STANDARD FORM UNIT



NOTES:
1) FOR OPTIMAL REINFORCEMENT PLACEMENT IN THE NUDURA FORM, SPACING OF HORIZONTAL REINFORCEMENT TO BE SPECIFIED AT 18" (457mm) O.C. AND VERTICAL REINFORCEMENT TO BE SPECIFIED AT MULTIPLES OF 8" (203mm) O.C. REFER TO NUDURA REINFORCEMENT PLACEMENT DETAILS.

This detail is for general informational purposes only. The project design professional determines, in its sole discretion, whether this detail or a functionally equivalent detail is best suited for the project with respect to any architecture, engineering, and design requirements, including any local building code requirements. If this document is not reviewed and the product is not approved for use by a licensed design professional, the customer agrees that the detail may contain substantive flaws requiring correction, and hereby releases Tremco CPG Inc. from any and all liability related to the design and installation of the product. This detail is subject to change without notice. Contact Tremco to ensure you have the most recent version.

Engineering Parameters



Detail: Nudura 10" (254mm) 45° Form Reinforcement, Plan View			File Name:
Drawn by: NL	Checked by: KS	Scale: 1:8	A10B06
Revision #: 04	Revised by: KAB	Date: 3/13/2024	

